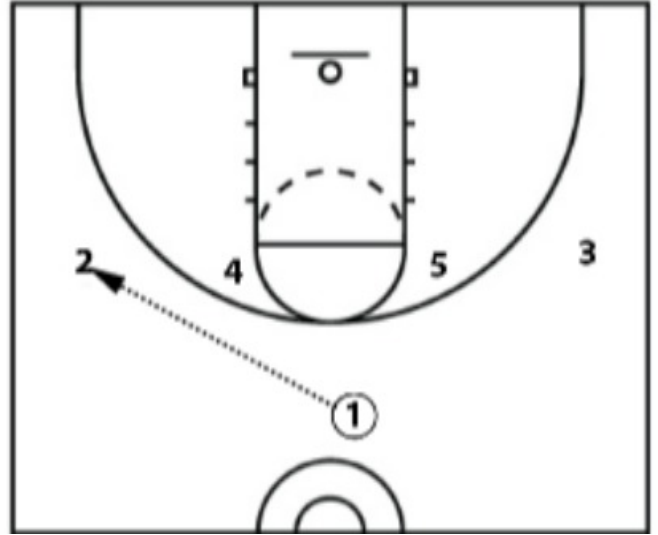


IU - Double DHO

This play starts in a 1-4 high alignment with the bigs on the elbows and guards on the wings.

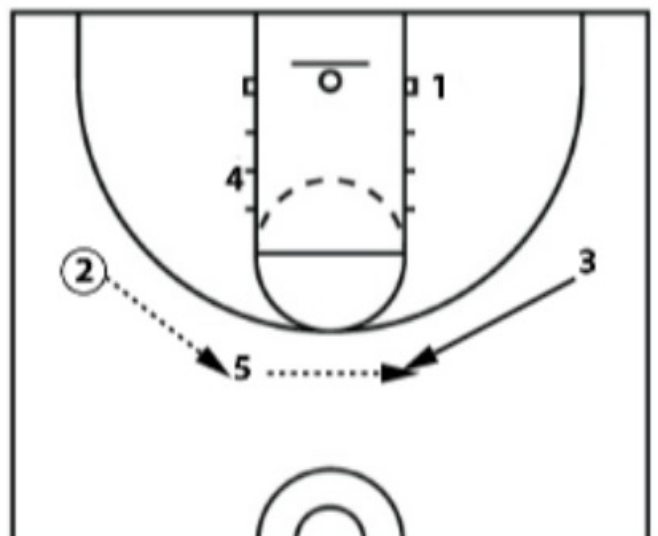
The action starts with a pass to the 2 on the left wing.



After passing it, the 1 cuts to the opposite block. The 5 pops out to the opposite high post area, and the 4 drops.



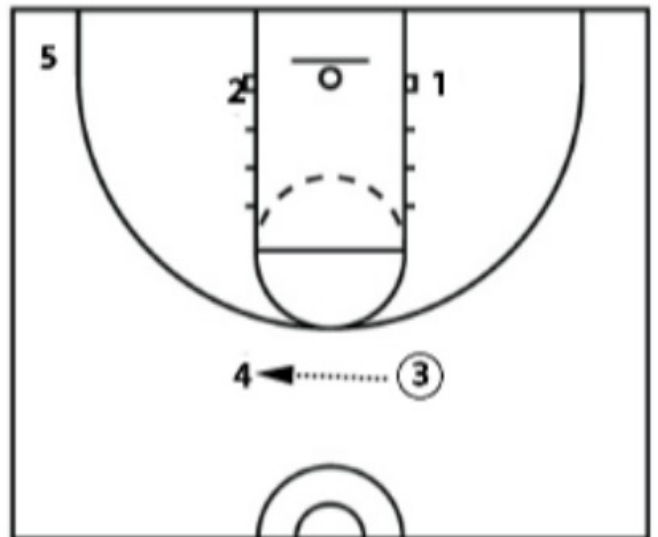
The 3 cuts to the high post area on his side as the ball is passed from the 2 to the 5, and then the 5 to the 3.



The 4 sets a backscreen for the 2 to cut to the block, and the cuts to the high post area. The 5 clears to the corner.



The 3 passes the ball to the 4.



The 2 comes off of screens from the 1 & the 3 and continues curling around to receive a dribble handoff from the 4. This allows the 2 a clearout on that side as he receives the handoff.

