

# IU - Flex - Diagonal - Down

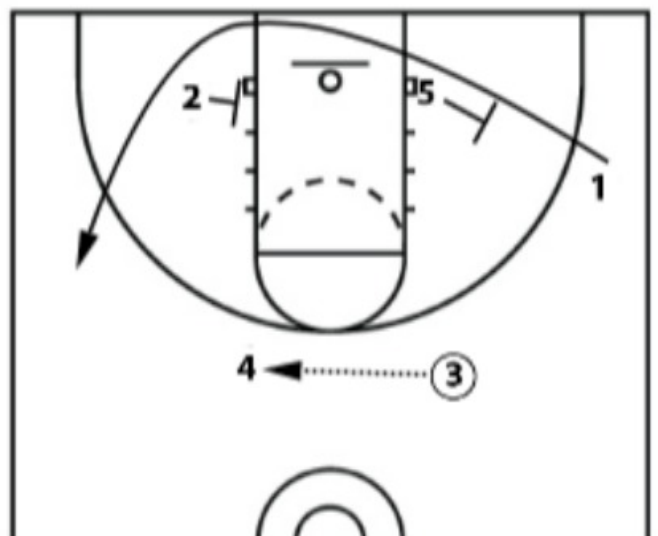
This play starts in a 1-4 high set with the bigs on the elbows and the guards out on the wings.



The action starts with a dribble handoff from the 1 to the 3. The 5 cuts down to the ball-side block, the 4 pops out, and the 2 cuts to the opposite block.

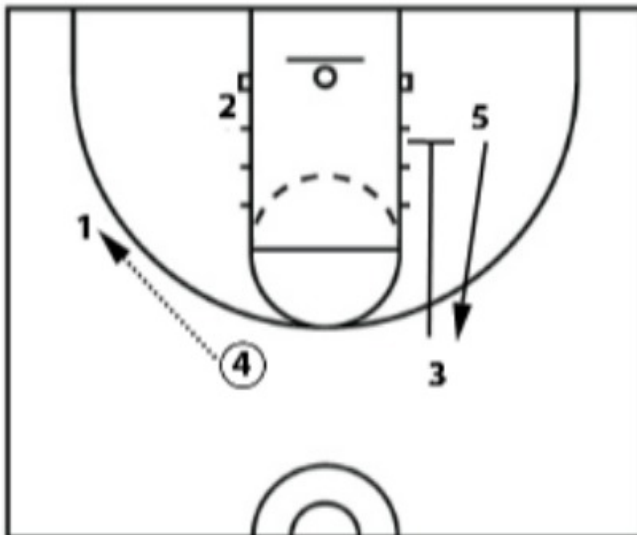


The 3 passes the ball to the 4. The 1 comes off of a flex screen from the 5 and another screen from the 2 to the opposite wing.

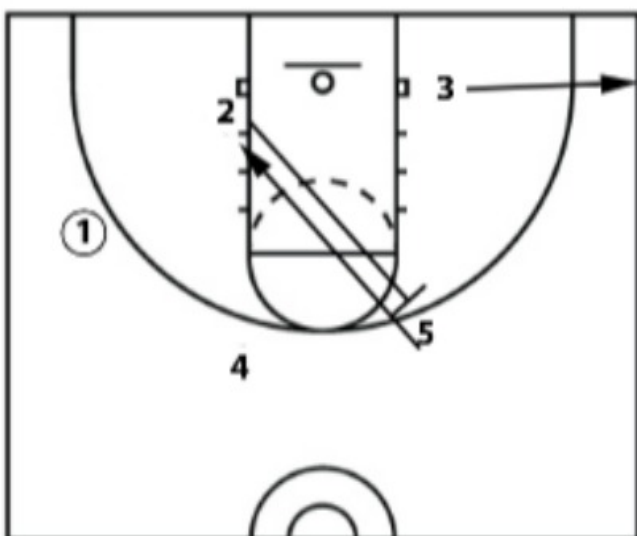


As soon as the 5 sets his backscreen for the 1 and the 3 throws to the 4, the 5 receives a down screen from the 3 and pops to the top.

The 4 passes to the 1 on the wing.



The 2 sets a diagonal screen for the 5 and the 1 looks to hit him.



After the 2 sets his diagonal screen for the 5, he'll receive a down screen from the 4 to pop to the top of the key.

