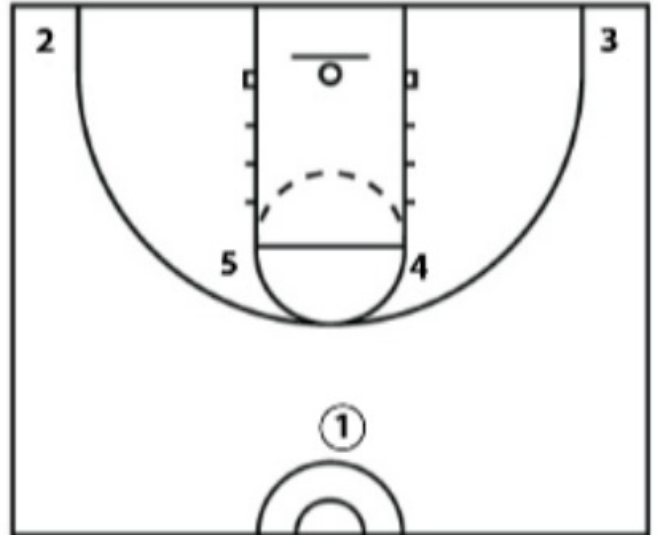
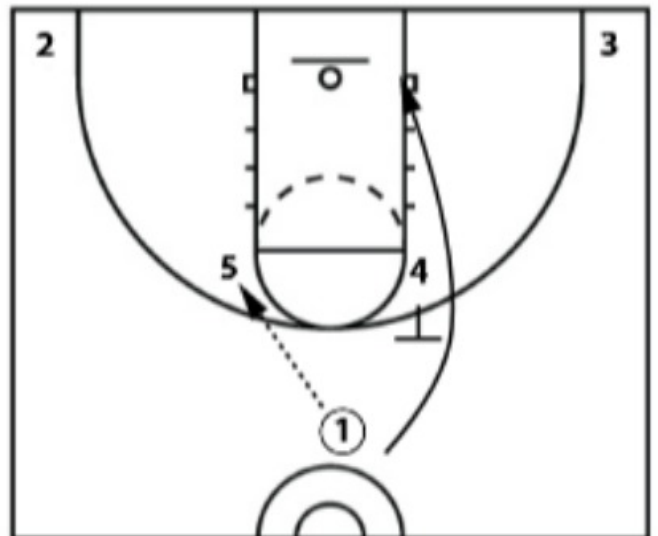


IU - Diagonal Down

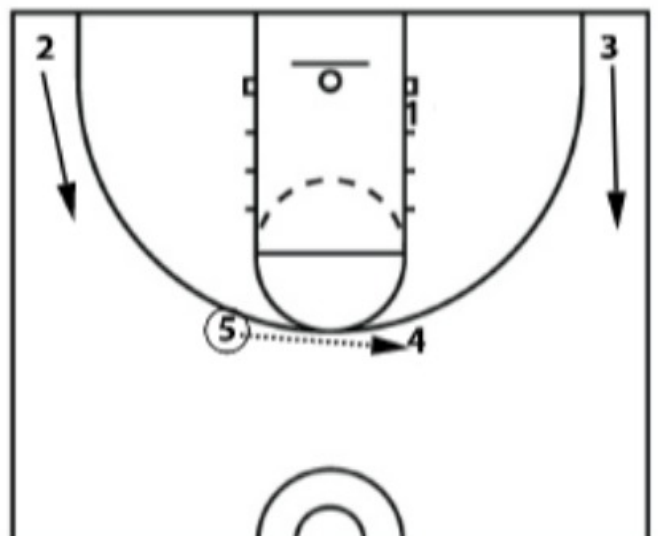
This play starts with the 1 at the top, the 5 and 4 on the elbows, and the 2 and the 3 in the corners.



The 1 enters the ball into the 5, then comes off of a backscreen from the 4 to the opposite block.



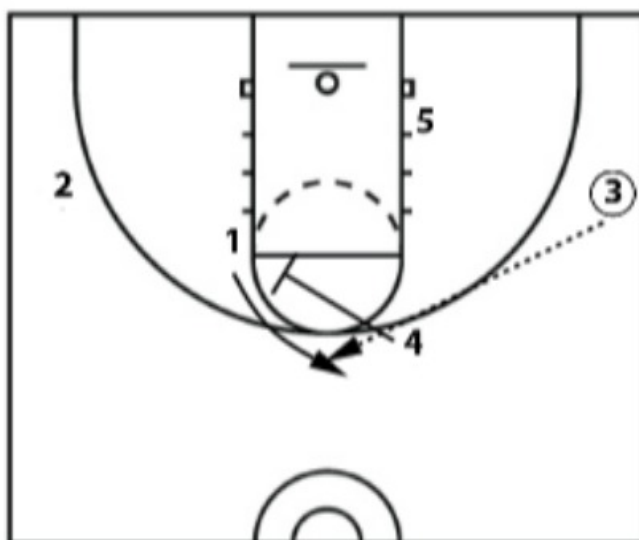
The 5 will pass to the 4 and the 3 and 2 will cut up to the wings.



The 4 will pass to the 3 and the 1 will set a diagonal screen for the 5.



The 3 will look to get the ball in the post to the 5. After the 1 sets the diagonal screen for the 5, he will receive a down screen from the 4 to pop to the top of the key and receive a pass.



After the 1 receives the ball at the top of the key, he receives a ball screen from the 4. He has multiple options off of this. He can attack the basket, he can pull up, he can hit the 4 on the pick & pop, he can hit the 5 on a dump-off, or hit the 2 or 3 for open shots if their men leave to help.

